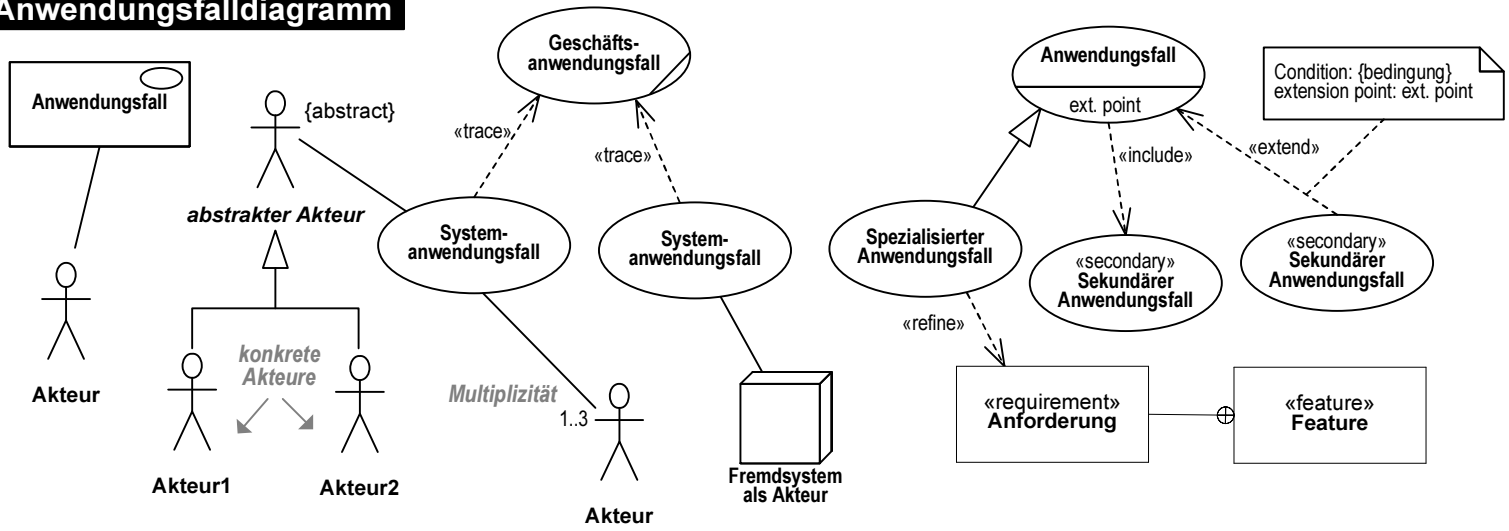
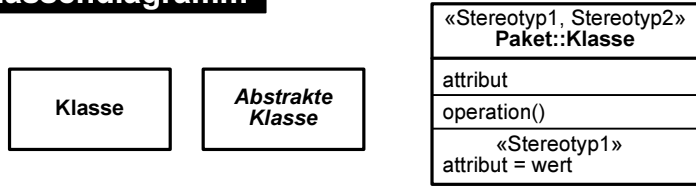


# Anwendungsfalldiagramm



# Klassendiagramm



## Syntax für Attribute:

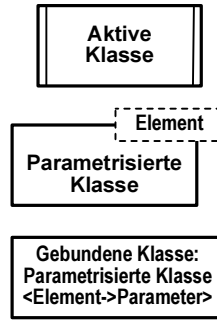
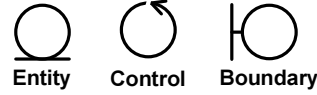
Sichtbarkeit Attributname : Paket::Typ [Multiplizität Ordnung] = Initialwert {Eigenschaftswerte}  
 Eigenschaftswerte: {readOnly}, {ordered}, {composite}

## Syntax für Operationen:

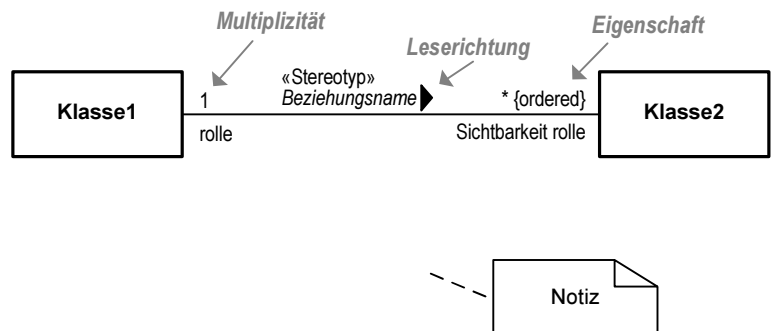
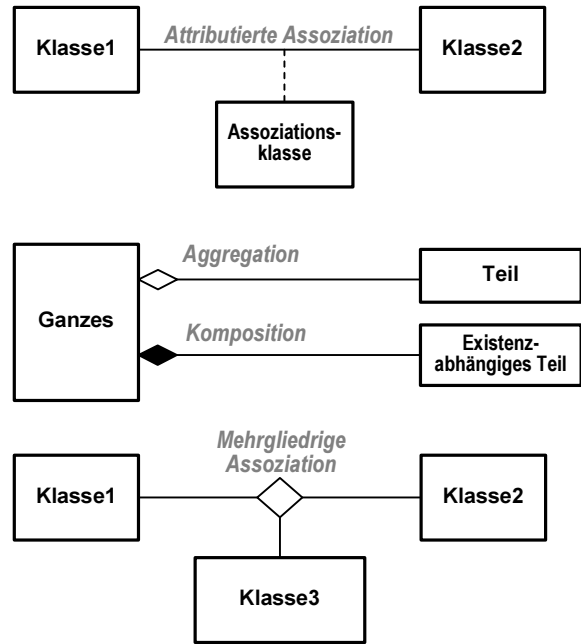
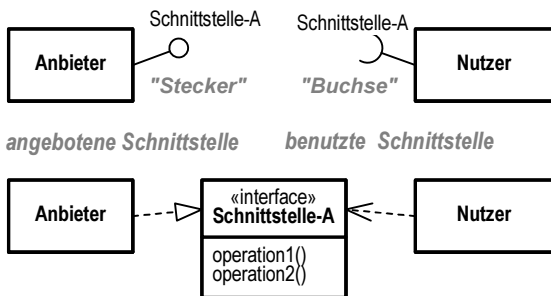
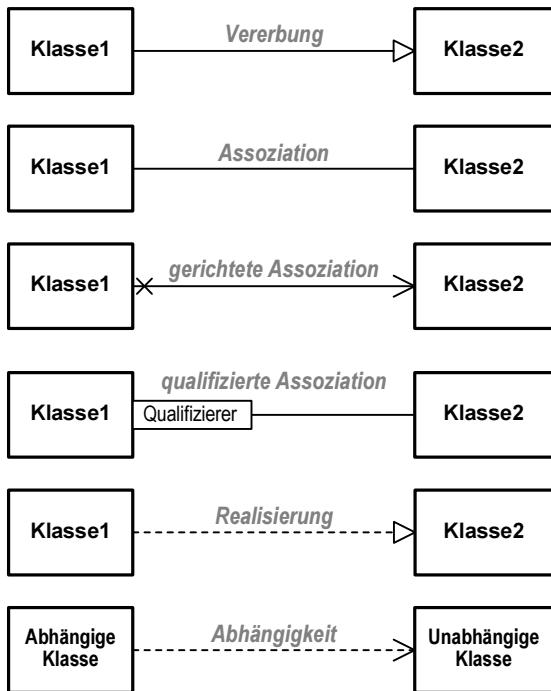
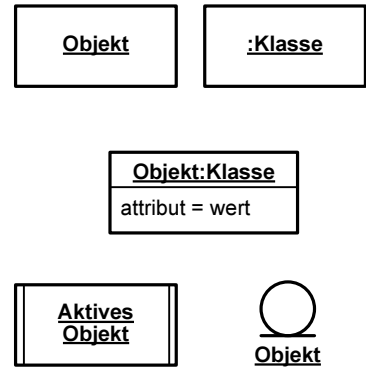
Sichtbarkeit Operationsname (Parameterliste):Rückgabety (Eigenschaftswerte)

Sichtbarkeit:  
 + public element  
 # protected element  
 - private element  
 ~ package element

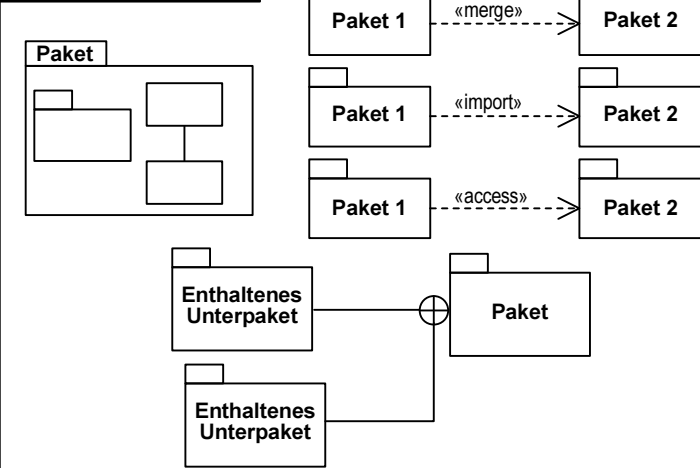
Parameterliste: Richtung Name : Typ = Standardwert  
 Eigenschaftswerte: {query}  
 Richtung: in, out, inout



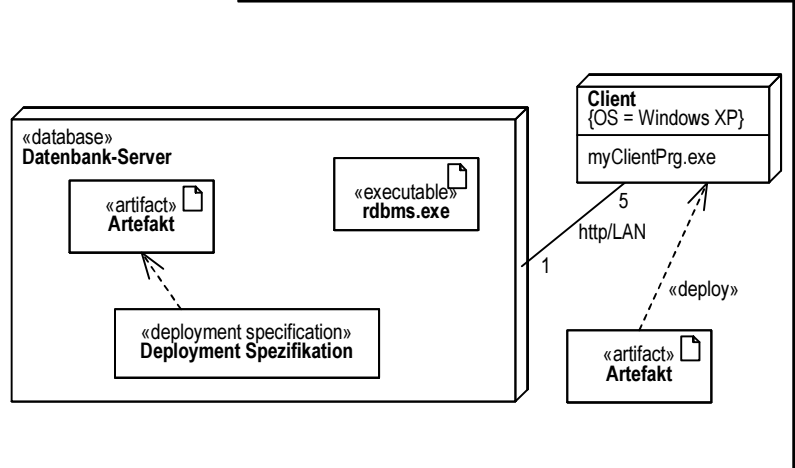
# Objektdiagramm



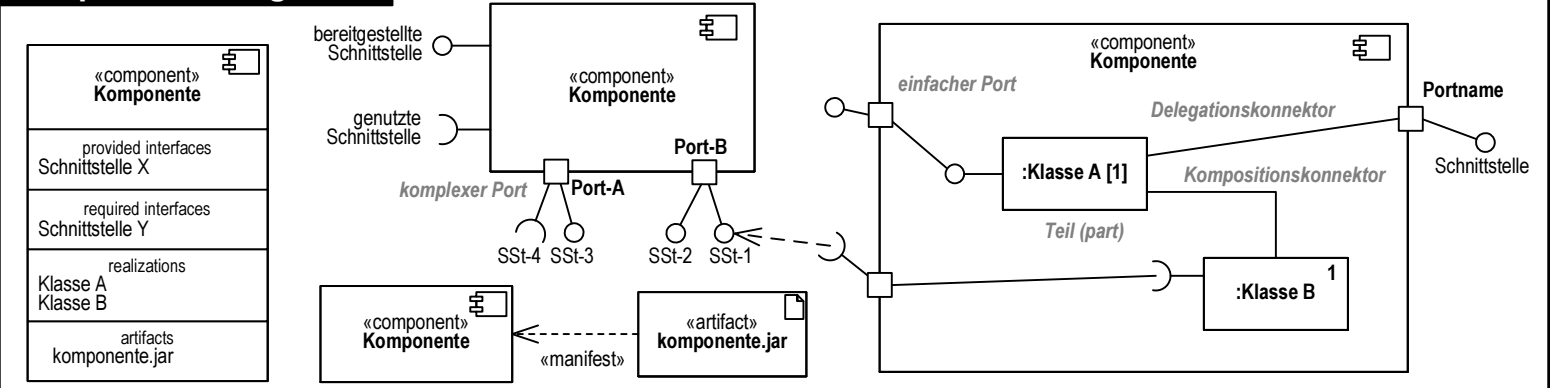
Paketdiagramm



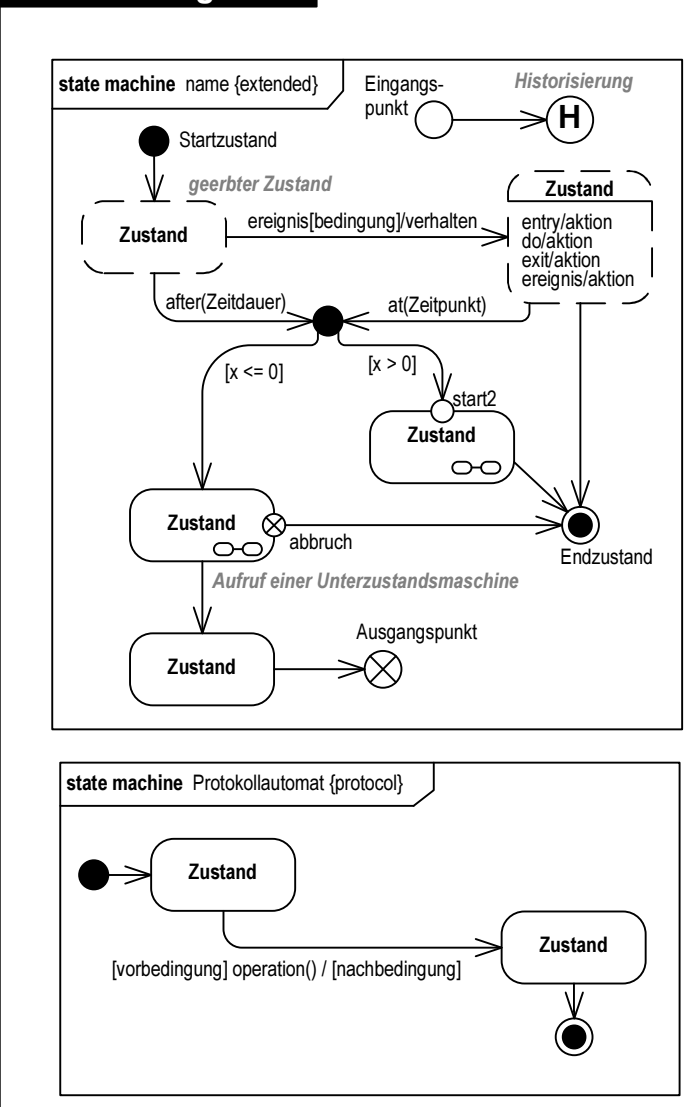
Einsatz- und Verteilungsdiagramm



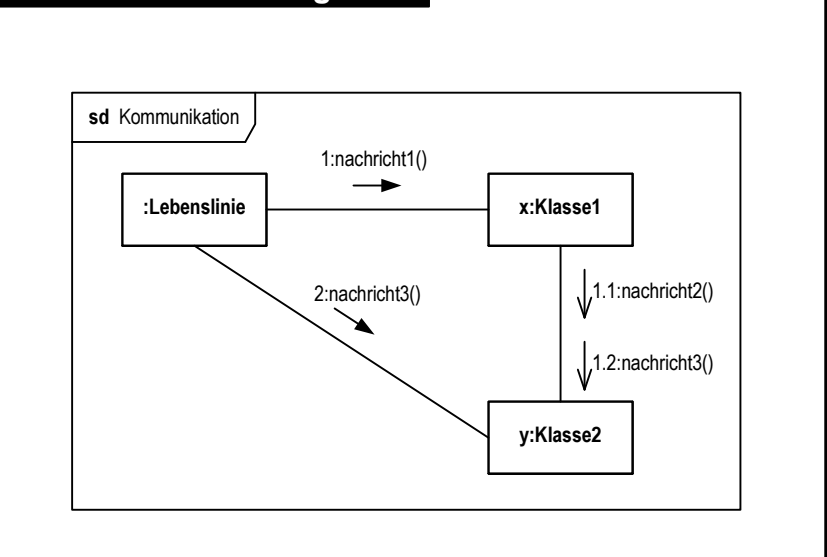
Komponentendiagramm



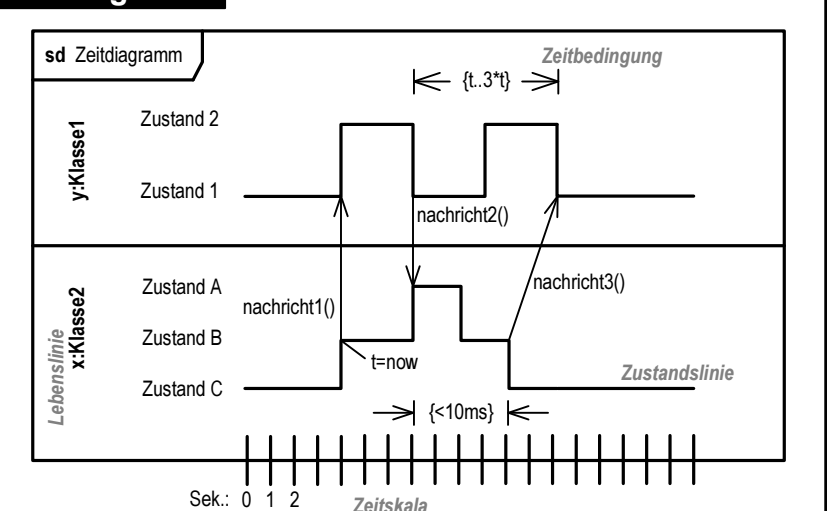
Zustandsdiagramm



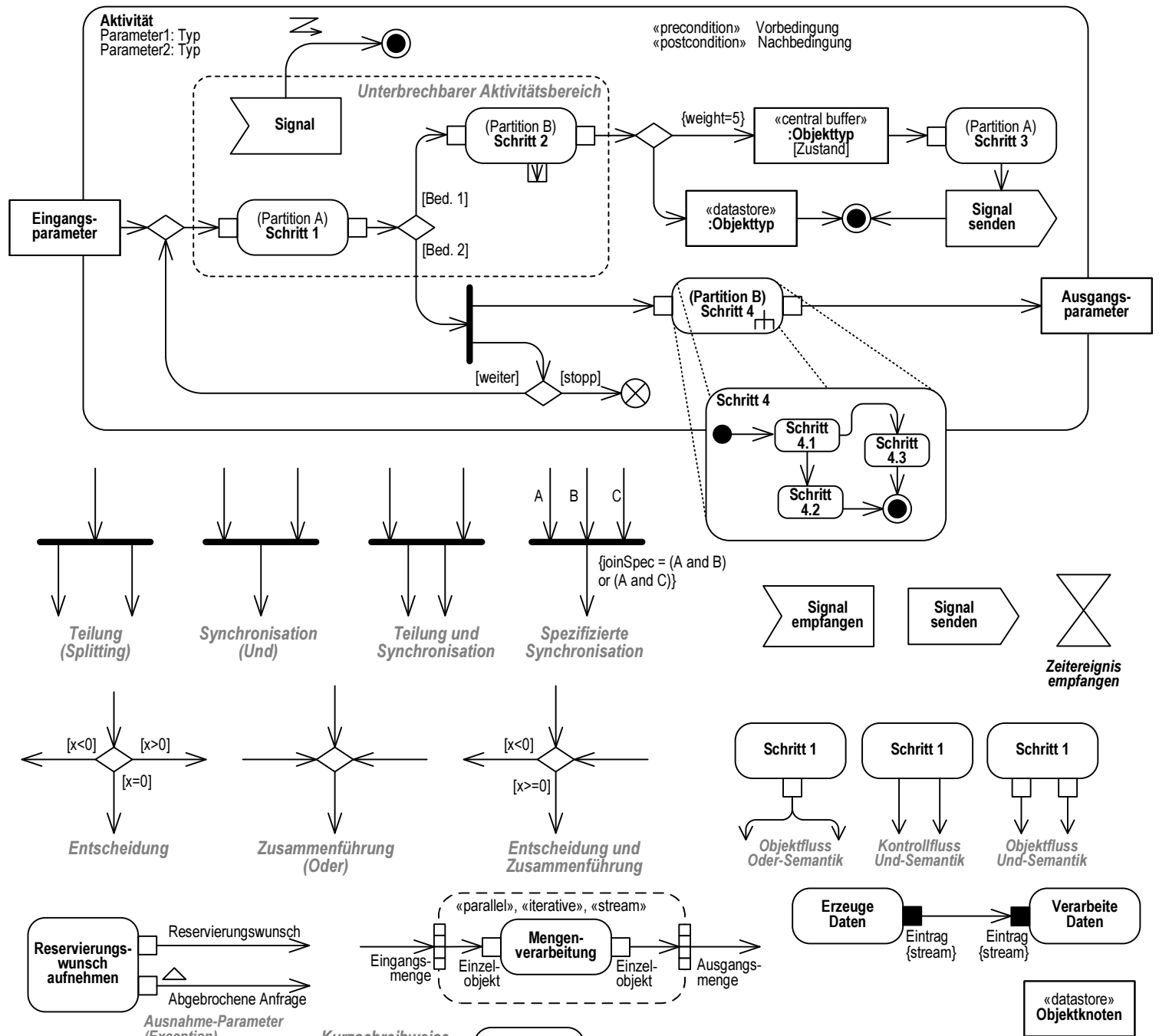
Kommunikationsdiagramm



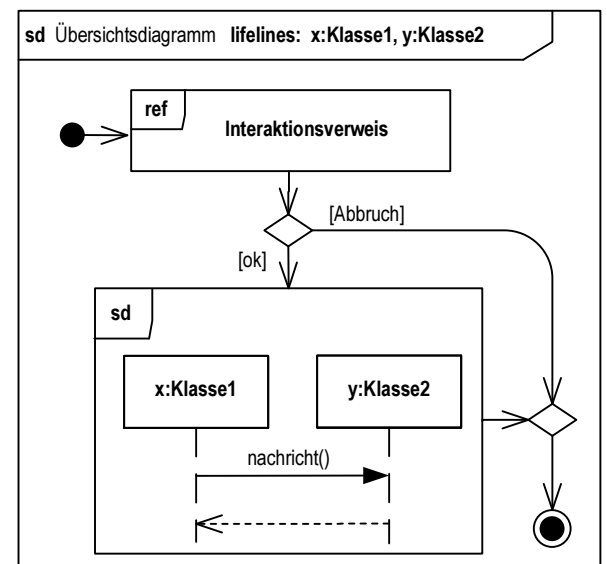
Zeitdiagramm



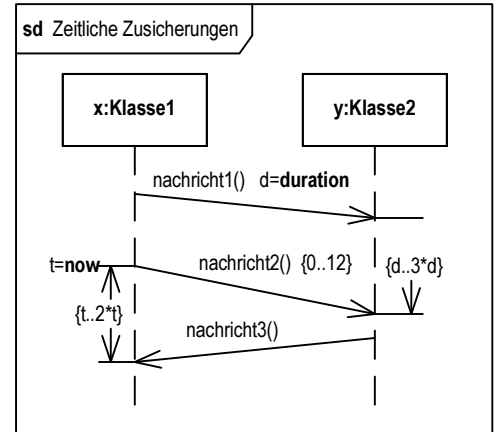
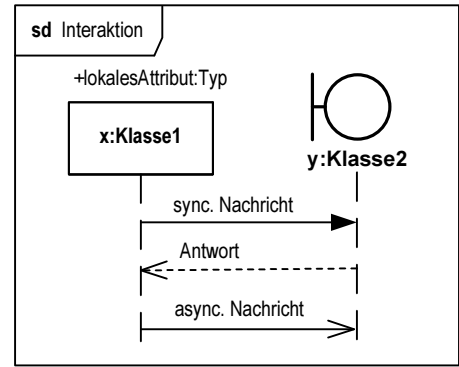
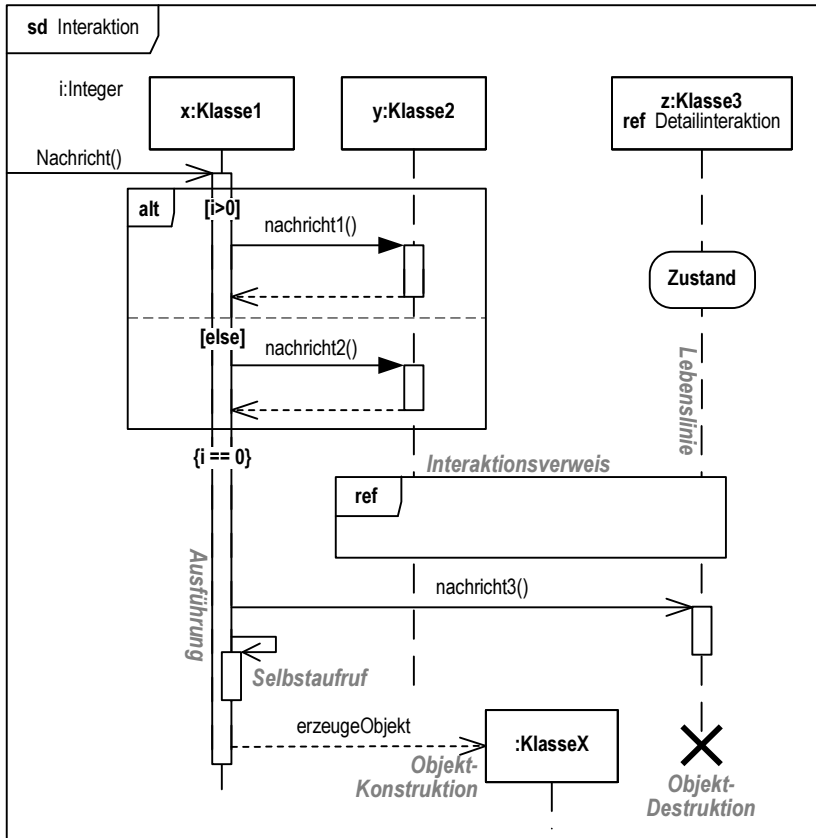
# Aktivitätsdiagramm



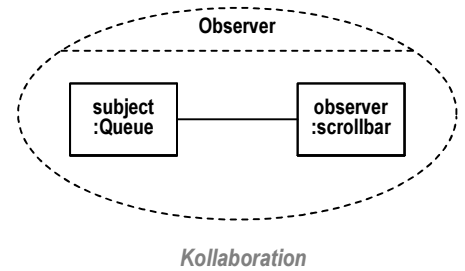
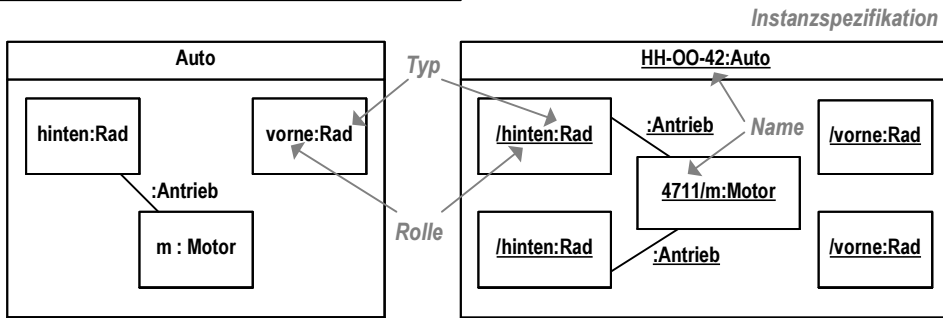
## Interaktionsübersicht



## Sequenzdiagramm



## Kompositionsstrukturdiagramm



## Profildiagramm

